

Study Abroad
at the University of Roehampton,
London

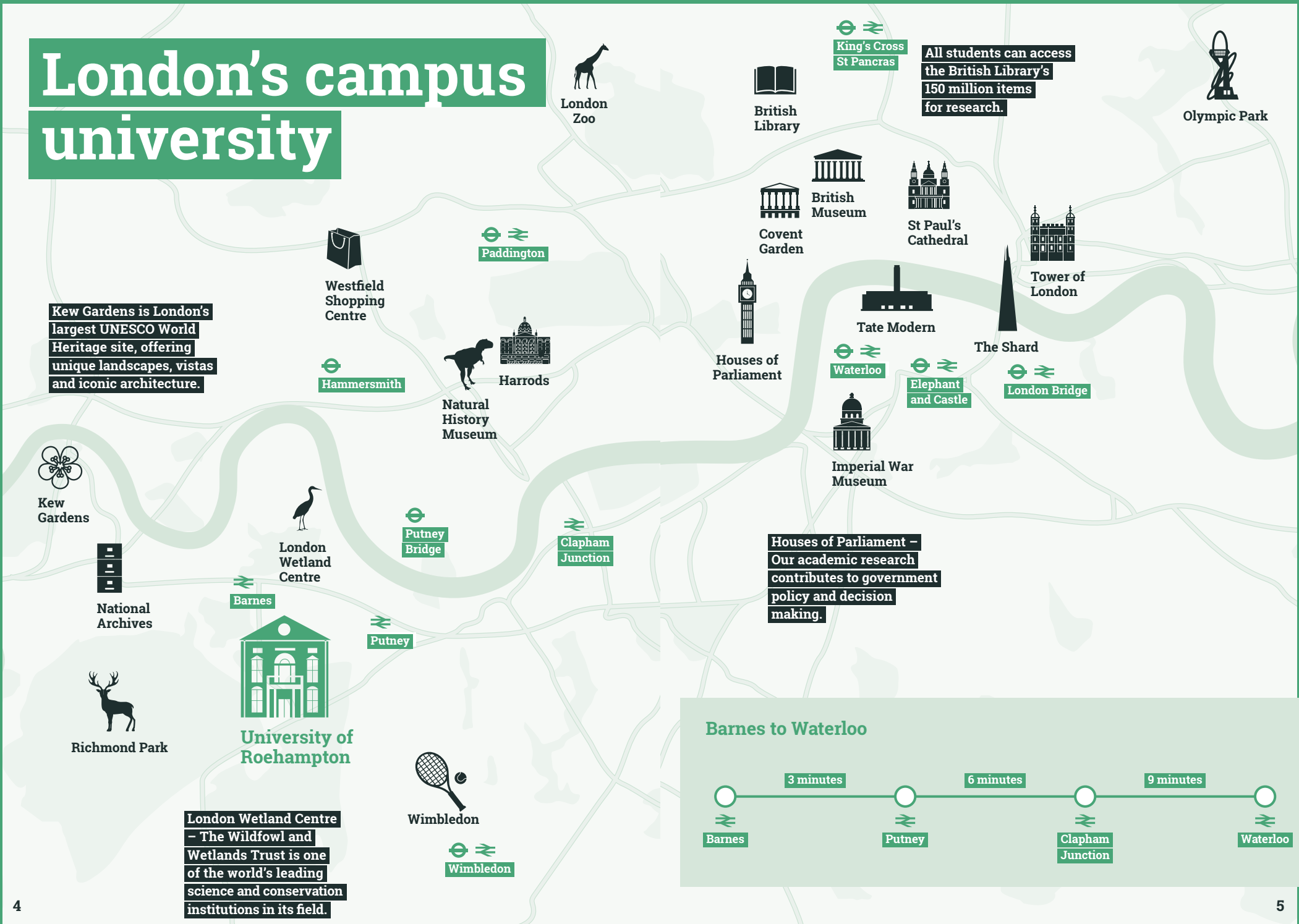


Welcome to Roehampton

The University of Roehampton invites you to study abroad on our beautiful campus in south west London. You will live and study alongside Roehampton students from the UK and around the world, make life-long friends and return home with a new perspective on the world and the life skills that employers are looking for.

Studying at Roehampton gives you the best of both worlds; a welcoming campus community and easy access to central London.

London's campus university

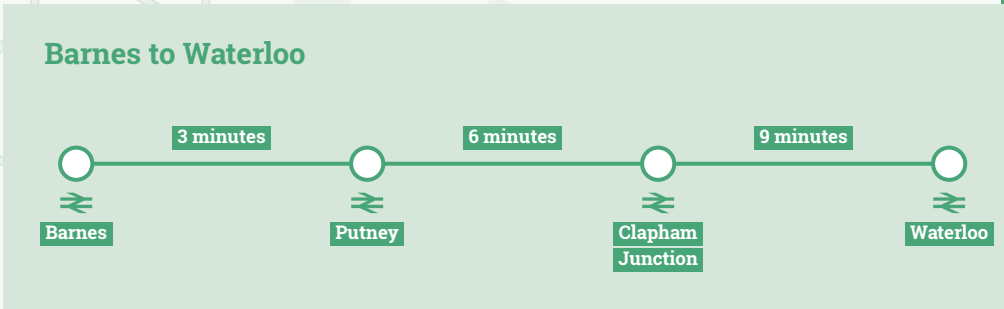


Kew Gardens is London's largest UNESCO World Heritage site, offering unique landscapes, vistas and iconic architecture.

All students can access the British Library's 150 million items for research.

Houses of Parliament – Our academic research contributes to government policy and decision making.

London Wetland Centre – The Wildfowl and Wetlands Trust is one of the world's leading science and conservation institutions in its field.



Your Campus

With a history dating back over 175 years, Roehampton's four Colleges create a beautiful 54-acre parkland campus, with historic buildings alongside modern, cutting-edge facilities.

You can enjoy our excellent campus facilities including a state-of-the-art library,

computer and esports suites, dance and drama studios and laboratories for sports and biosciences. After class you can keep fit in our on-campus gym, catch up with your new friends in our organic coffee shop or dance the night away at our weekly club night.

Our location in leafy south west London, welcoming campus and 24/7 security all give you extra reassurance of safety in London.

54

acre parkland campus

30

minutes to central London

7

miles to London's West End

4

friendly Colleges

1

opportunity of a lifetime



Academic Programme

Roehampton is a friendly, modern, lively academic community with a growing international reputation for the high quality of its teaching and research. As a study abroad student you will be taught alongside both UK and international students by academics at the cutting edge of their fields.

Modules

You can choose modules from across Roehampton's academic departments to satisfy general education or major/minor requirements. Each year our study abroad module catalogue is updated with hundreds of modules to choose from – find the current list online at roehampton.ac.uk/roehamptonabroad

Credit Transfer

Each Roehampton module carries UK credits. You will receive a transcript at the end of your studies, which your home University will use to transfer these credits to your academic record back home.

Subject list

The academic areas you can choose to take modules from are:

Arts: Dance, Drama, Computer Science, Cyber Security, Web Development, Digital Design, Digital Media, Linguistics, Film, Journalism, Photography and Media and Communications

Business and Law: Accounting, Business Management, Finance, Economics, Entrepreneurship, Human Resources Management, Law, Marketing

Education: Early Childhood Studies, Education Practice, Sports Coaching, Sports Management

Humanities and Social Sciences: English Literature, Creative Writing, Classical Studies, History, Politics, Philosophy, Criminology, Sociology, Liberal Arts

Life and Health Sciences: Anthropology, Biological Sciences, Nutrition and Health, Sport and Exercise Sciences, Sport Psychology, Zoology

London Studies

Psychology

London Studies

We are proud to offer a suite of London Studies modules specifically designed for study abroad students. These modules make the most of our proximity to the city centre, and offer you the chance to experience London from a critical, academic perspective. With London as the backdrop to study, the city functions as a living classroom. London Studies modules include:

- Introduction to the London Stage
- Magic, Murder and Mystery in London Literature
- Londonopolis: Exploring the Global City
- Hidden London
- Shakespeare in London
- Media City and Cultural Capital

Your Student Experience

As a study abroad student you can take advantage of everything Roehampton's campus has to offer, plus you will receive extra support from your dedicated Roehampton Abroad team.

Arrivals and Orientation Programme

To help you settle into life at Roehampton we will provide:

- Heathrow Airport collection service
- Full orientation programme
- London scavenger hunt

Guaranteed on-campus housing

- Living with Roehampton students
- Private bedrooms in shared flats
- Rooms with private bathrooms available
- Shared kitchen facilities
- Optional meal plan available

Roehampton Abroad Social Programme

In addition to the great on-campus events and activities, you can take part in the social programme. Designed for international students with a qualified tour guide past trips have included:

- Overnight trip to Wales
- The Tower of London
- West-End Theatre Show

What our students say...

"The best thing about Roehampton is its diversity. You get to know people who come from all over the world, experience new cultures and learn new languages."

"The location, you get the best of both worlds – a campus feel with lots of students around but very close to central London with so much going on!"



Supporting you

We are here to help at every stage of your journey, so nothing can get in the way of your success. We offer a range of support, from academic learning support through to services such as student counselling and an on-site medical centre.

If you need support while you are with us, rest assured you will find plenty on offer.



Roehampton Abroad

Roehampton Abroad is your dedicated on-campus study abroad team, on hand to support you. We will advise you throughout the application process, help you to prepare for arrival, support you during your time on campus and be your first point of contact until it is time for your adventure in London to end.



Academic Support

The academic system might be a little different than in your home country. The Academic Achievement team run drop-in sessions and writing skills workshops to help you succeed academically.



State-of-the-Art Library

The world-class University of Roehampton Library is staffed by a friendly and dedicated team who are there to help you. As a Roehampton student you will be able to enjoy all the benefits of our resources including:

- Thousands of online resources
- Private study rooms
- Learning Skills Hub



Disabilities and Dyslexia Support

- Experienced on-campus team
- Accessible accommodation and classrooms
- Personalised support to meet your needs

We will ask you to inform us of your needs in advance so we can make necessary adjustments for you – all information will be kept strictly confidential and will only be used to support your studies.



Your Wellbeing

Each College has a designated Student Wellbeing Officer available to provide you with confidential emotional and practical wellbeing support, including signposting you to other relevant support services.

- Wellbeing drop-ins
- Counselling services
- Chaplaincy pastoral care
- Senior students in on-campus accommodation



Diversity at Roehampton

At the University of Roehampton we are proud of our diverse and inclusive community.

It is a welcoming and friendly space for our 9,000 students from more than 146 countries. Student societies and support networks will help you to connect with other students and feel safe and supported at Roehampton.

Application and Admissions



How to Apply

You can apply online by visiting our website

roehampton.ac.uk/roehamptonabroad

Application Deadlines

Autumn/Full Year: 31 May

Spring: 31 October

Application Requirements

Applicants should:

- Have a minimum 2.8 GPA (out of 4) or equivalent
- Have approval from their home university (where appropriate)
- Be 18 years of age or older
- Have achieved a minimum of IELTS 6.0 or equivalent proof of English Language (where necessary)

Programme Dates and Costs

For full up-to-date details please visit

roehampton.ac.uk/roehamptonabroad

If you are joining us from a partner institution please speak to your home school advisor for fee information.

Contact Us

The Roehampton Abroad team are available via:

Email: roehamptonabroad@roehampton.ac.uk

Phone: +44 (0)20 8392 5009

In person: we regularly travel overseas and would love to meet you – email us to find out where we'll be next!

Full programme details, dates, costs and application information can be found on our website

roehampton.ac.uk/roehamptonabroad

Our campus helps us provide a close-knit community feel for our students and a peaceful environment in which to study and live. At Roehampton you are valued as an individual.



University of Roehampton

Roehampton Lane | London | SW15 5PJ | UK

roehampton.ac.uk

Email: roehamptonabroad@roehampton.ac.uk

Phone: +44 (0)20 8392 5009



[@roehamptonuni](#)



[roehamptonabroad](#)



[roehampton.uni](#)



[roehamptonabroad](#)

This document was accurate at the time of going to print, January 2019. It is important therefore that you check the University website for updates as some information is subject to change.